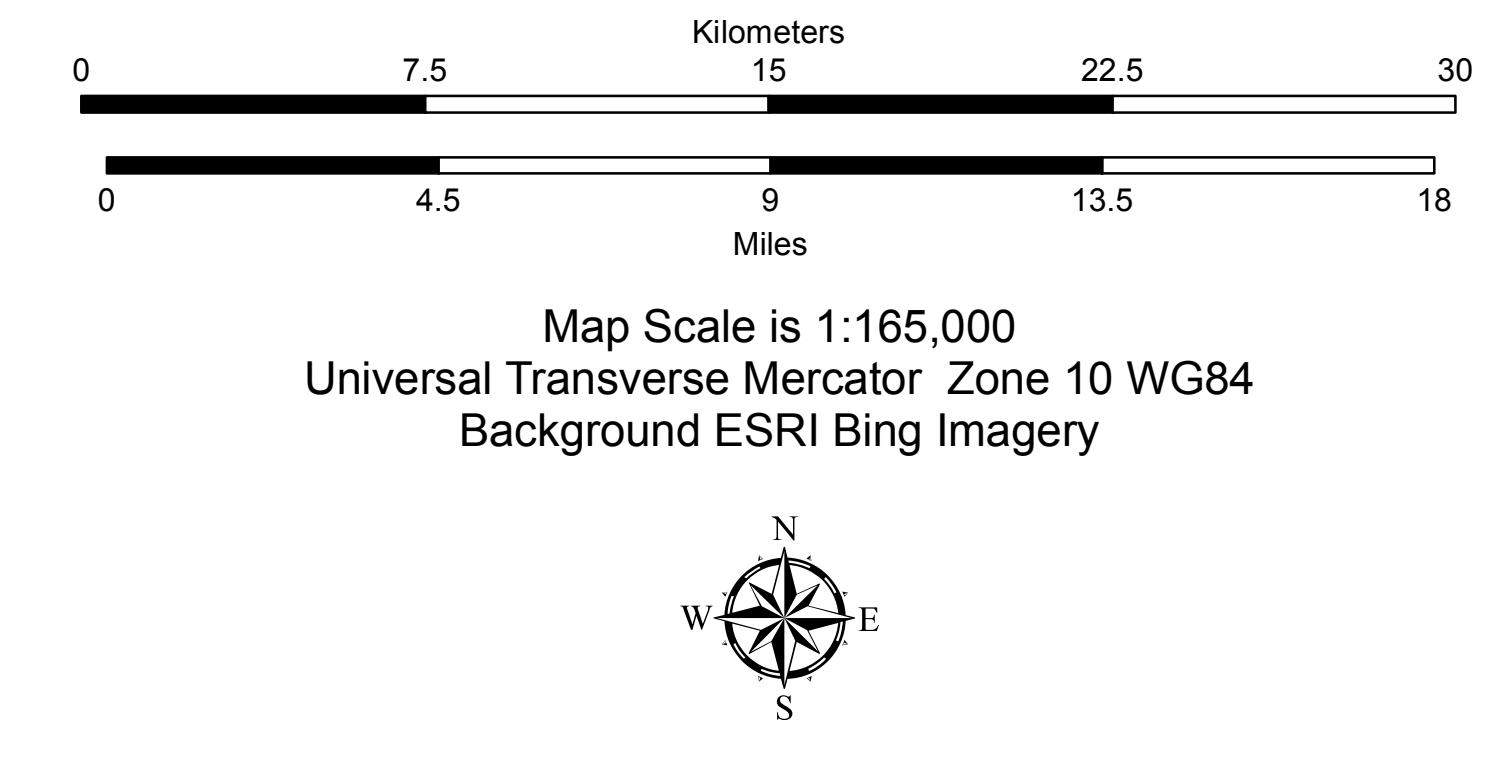


- |   |   |  |
|---|---|--|
| 0, Uncl, Unclassified   | 8, Hb, Hordeum brachyantherum grassland   | 19, AnGr, Annual grassland SNHS              |
| 1, Np, Nassella pulchra grassland   | 9, Dcs, Deschampsia cespitosa grassland   | 20, Cp, Carduus pycnocephalus SNHS           |
| 2, NpEc, Nassella pulchra-Eschscholzia californica grassland - shallow soil | 10, JpJo, Juncus phaeocephalus-Juncus occidentalis herbaceous stand                       | 21, Sm, Silybum marianum SNHS                |
| 4, Fi, Festuca idahoensis grassland   | 11, JeJp, Juncus effusus-Juncus patens herbaceous stand                                   | 22, Rs, Raphanus sativus SNHS                |
| 5, Dc, Danthonia californica grassland                                      | 12, Cn, Calamagrostis nutkaensis grassland  | 23, Cm, Conium maculatum SNHS                |
| 3, NpHc, Nassella pulchra-Hemizonia congesta - serpentine soil              | 14, Co, Carex obnupta herbaceous stand  | 24, MisH, Misc herbaceous vegetation (other) |
| 6, Bc, Bromus carinatus grassland - coastal terrace                         | 15, HL, Holcus lanatus SNHS   | 25, AgGr, Agricultural Grass                 |
| 7, LcEg, Lasthenia californica-Erigeron glaucus - coastal terrace           | 16, HLAo1, Holcus lanatus-Anthoxanthum odoratum SNHS                                      | 26, DsGr, Partially disturbed                |
| 13, Pa, Pteridium aquilinum herbaceous stands                               | 17, HLAo2, Holcus lanatus-Anthoxanthum odoratum SNHS + tussocky grasses rushes and sedges |  |
|   | 18, Fa, Festuca arundinacea SNHS  |  |



- |   |
|---|
| 0, Uncl, Unclassified                       |
| 1, NiGr, Native grasslands                  |
| 2, ExGr, Exotic grasslands                  |
| 3, MisH, Misc herbaceous vegetation (other) |
| 4, AgGr, Agricultural Grass                 |
| 5, DsGr, Partially disturbed                |

